



## Plastic Coated Geo Strap Band Production Line with Single-screw Design Making Machine

Our Product Introduction

for more products please visit us on [plasticextrudersmachine.com](http://plasticextrudersmachine.com)

### Basic Information

- Place of Origin: Shandong, China
- Brand Name: Changyue
- Certification: CE
- Price: \$65,000.00/pieces  $\geq 1$  pieces
- Packaging Details: Export Film Packing / According To Customer
- Delivery Time: 15 Days (1 - 1 Pieces) To Be Negotiated ( > 1 Pieces)
- Supply Ability: 10 Acre/Acres per Month



### Product Specification

- Condition: New
- Plastic Processed: PP, PET
- Application: Strap Band
- Screw Design: Single-screw
- Screw Material: 38CrMoALA
- Screw Diameter (mm): 90
- Screw L/D Ratio: 33:1
- Screw Speed (rpm): 32 Rpm
- Showroom Location: Egypt, Turkey, United States, France, Viet Nam, Philippines, Saudi Arabia, Indonesia, Pakistan, India, Mexico, Russia, Thailand, Morocco, South Korea, UAE, Colombia, Sri Lanka, Bangladesh, Kazakhstan, Nigeria, Uzbekistan, Tajikistan, Japan
- Voltage: Customized
- Dimension(L\*W\*H): 30 M X 2 M X 3 M
- Power (KW): 22



### More Images



## Product Description

### Products Description

good quality fiber reinforced geo strap band making machine

geo strap band production line

geo strap making machine

PET packing strap band production line

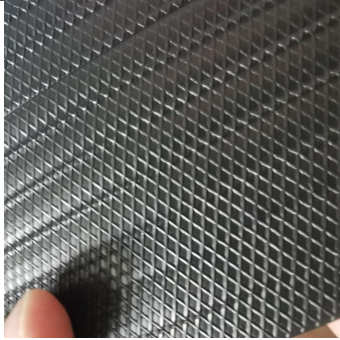
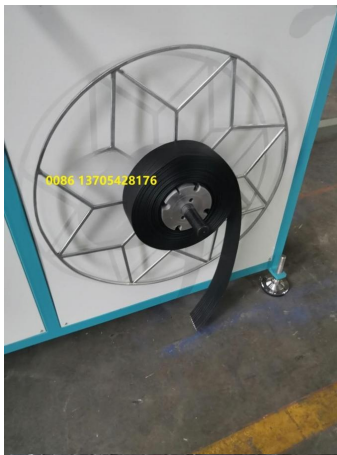
good quality PET strap band making machine

Pet Strap Band Production Line

model	width of band	quantity of strap band	output
WR-90/30	40-120 mm	1	200-350 kg /h

### Details Images





our workshop



## Our Workshop



## company profile



## Certifications





## Why Choose Us

### 1. Low cost

All the machine ,we make it ourself to reduce the cost of our customer.

### 2. Genuine product with excellent quality

\* We choose our material very strict. \* All the material come to our factory must pass the quality test \* Substandard goods are returned to the supplier.

### 3. Engerneers available to serve oversea

### 4. Quick delivery

\* The company provide just in time delivery with its streamlined supply chain.

### 5. Cost saving

\* Se take strong attention to every detail in the manufacturing process. \* The quality control in our factory is very strict. \* All defective semi-manufactures must be treated again or reject. \* All the machine must be checked out ,then delivered to our customer. \* All about that pushing up the price,but get good quality machine. \* What we want to do is give our customer a good quality product with stable working and long lived.



**Qingdao Changyue Plastic Machinery Co., Ltd.**

☎ 0086 13705428176

✉ [edward@hualideplast.com](mailto:edward@hualideplast.com)

🌐 [plasticextrudersmachine.com](http://plasticextrudersmachine.com)

SOUTH LONGYI ROAD, NO.2 JIAOXI INDUSTRIAL ZONE, JIAOZHOU CITY, QINGDAO, CHINA