



Woodworking PVC PUR Laminating Machine Automatic Film End Cutting

Our Product Introduction

for more products please visit us on plasticextrudersmachine.com

Basic Information

- Place of Origin: Shandong, China
- Brand Name: Changyue
- Certification: CE, ISO
- Packaging Details: Export Film Packing / According To Customer
- Delivery Time: 15 Days (1 - 1 Pieces) To Be Negotiated (> 1 Pieces)

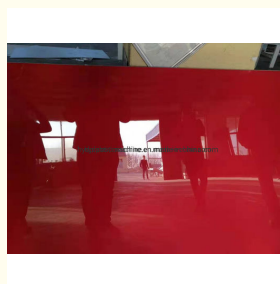
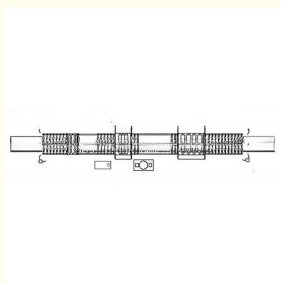


Product Specification

- Model NO.: 1350TZ-PUR
- Work Mode: Continuous
- Controlling Mode: PLC
- Automatic Grade: Automatic
- Decorative Film Or Paper: PVC Film, Pet, Acrylic Sheet HPL Sheet
- Glue: PUR Glue
- Board: Any Board With Flate Sureface
- Heating Style For Roller: Oil Heating
- Heating For Board: Heating Oven
- Loading Board: Worker Or Automatic
- Film End Cutting: Automatic
- Finished Board Unloading: Worker Or Automatic
- HPL Sheet Loading: Automatic
- Transport Package: Free With PE Film Or Plywood Package With Charge



More Images



Product Description

Automatic Film End Cutting Woodworking Machine for PUR Laminating Line PVC Laminating

Product Description

Automatic Paper/ PVC Film/ foil PUR hot melt glue Laminating Machine Sticking Machine Woodworking Machine

This production line adopt the special precise hotmelt glue system .This machine is specialize in sticking on panel and multiplayer board, it is suitable for produce high-glossy , panel ,cabinet ,furniture door, honeycomb board and foam board sticking .etc .

- 1.Laminate material :High-gloss pvc , acrylic , HPL, PVC board and metal board ,PE, PET ,PVC, veneer , paper .ect.
- 2.Based panel material :MDF board ,chipboard, plywood, gypsum board, HPL, foam board ,aluminum panel ,steel panel.
- 3.Glue: PUR hotmelt glue .
- 4.User :Furniture ,cabinet ,panel door producer ,new building material factory ,high-grade decoration board factory .



Technical parameters

Item	QL1350-PUR laminating machine
Dust clean	ONE
Panel preheating	ONE
PUR glue machine	55 gallans
silica gel glue roller	240*1pc
steel glue roller	190*1pc
steel glue roller heating	adopt a oil heating machine
Glue heating after coating	ONE
silica gel pressing roller	Φ240mm*2pc
steel pressing roller	Φ240mm*2pc
Total power	51kw
Max.glue coating width	1300mm
Max.working width	1300mm
Processing thickness	3-60m

Detail information

- 1.Work table with conveyor rollers.
2. Dust removing is for remove dust and small article on the board surface before glue coating.
3. Panel preheating oven that for heating the panel before gluing, cause as the gluing using PUR hot melt. It can prolong the working time gluing adhesive.
4. Single side glue spreading, the glue coater roller is oil heating which precise heating element which create a stable and equality temperature, combine with melting tank that machine are more capability.
5. Working table for out feed conveyor roller.
- 6.This machine for panel size 1220*2440mm,we can also make the machine suitable for 1830*3660mm panel which need addition charge.

some details parts of the PUR laminating machine line







昌岳塑机
CHANGYUE

Qingdao Changyue Plastic Machinery Co., Ltd.



0086 13705428176



edward@hualideplast.com



plasticextrudersmachine.com

SOUTH LONGYI ROAD, NO.2 JIAOXI INDUSTRIAL ZONE, JIAOZHOU CITY, QINGDAO, CHINA